



Tiempo y servicios para las mujeres

HOW IS OUR CITY REORGANIZING ITSELF FOR WOMEN?



ALCALDÍA MAYOR DE BOGOTÁ D.C.



70%

Do not get to pursue education beyond secondary school

33%

Are deprived of free time for self-care

90%

Are low - income

20%

Have been diagnosed with illnesses

1,2 million

women dedicate their time mainly to unpaid care work

TIME POVERTY

What is it?

The Care System articulates services to address care demands in a shared-responsible manner between the city government, the national government, the private sector, communities and households, to balance the provision of care, so caregivers have time to pursue personal development, self-care, well being, income generation and get involved in political participation.

Objectives

Recognize the contribution of caregivers

Redistribute responsibility more equitably between women and men; and

Reduce Unpaid Care Work



Beneficiaries

CAREGIVERS

EDUCATION
WELL-BEING
INCOME
GENERATION

CHILDREN UNDER 13 YEARS OLD

PROFESSIONAL
CARE AND PLAYFUL
ACTIVITIES

ELDERLY WHO REQUIRE CARE

PERSONS WITH DESABILITIES WHO REQUIRE CARE

MEN AND FAMILIES

WORKSHOPS FOR
CULTURAL CHANGE



HOW DOES IT OPERATE?

1 Care Blocks

2 Care Buses

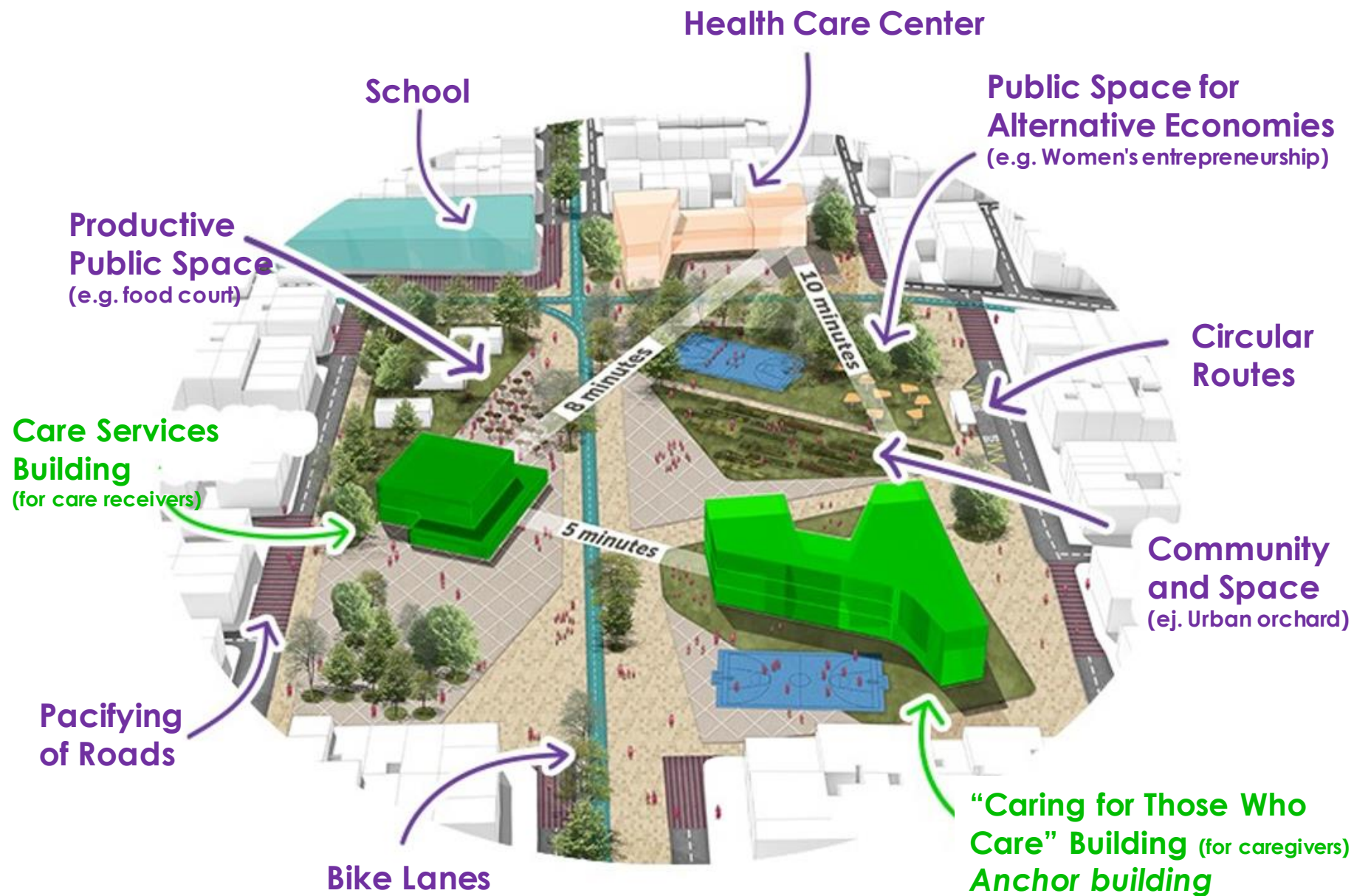
3 Care Home Delivery

4 Care Units such as schools, daycares, among others.

SIMULTANEITY AND PROXIMITY

1

 Care Block



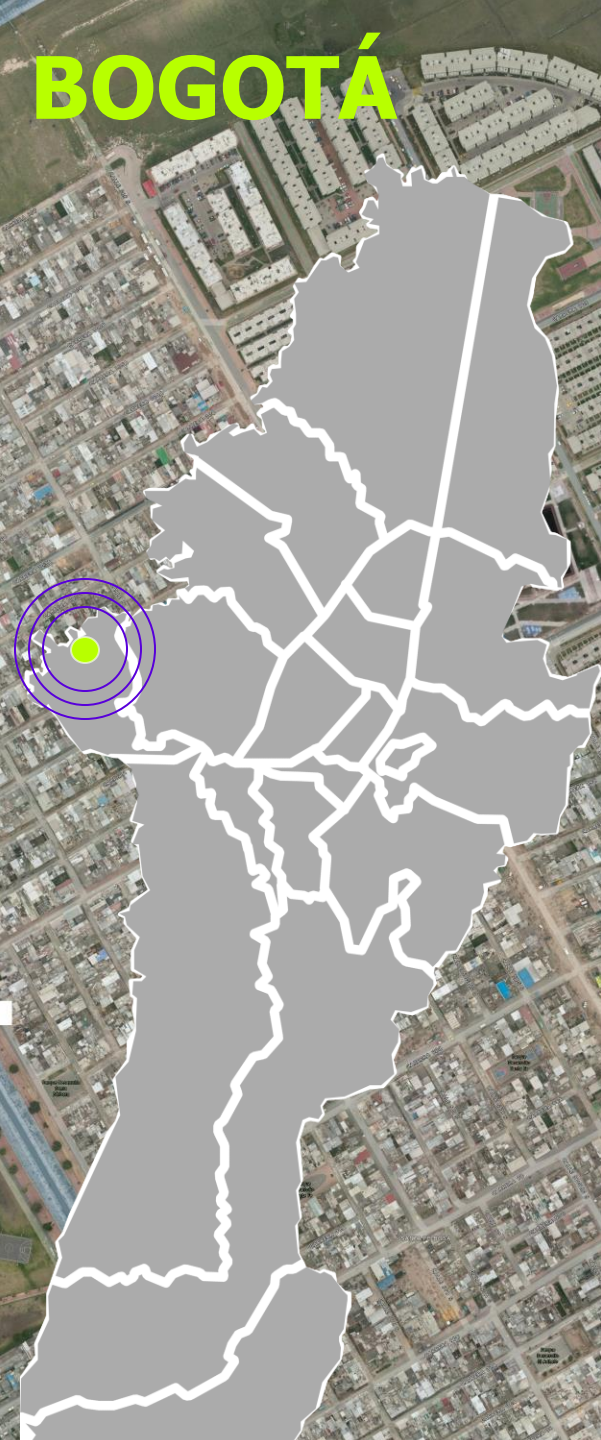


Center for Social Development

- **2 levels and 24 spaces such as: 6 auditoriums, 2 multiple classrooms, 2 system classrooms.**
- **25mts pool and children's pool.**
- **Gastronomy workshop, beauty and esthetics classroom, gymnasium.**
- **Outdoor theater capacity of 300 people.**
- **Investment US 2.6 million (\$10,142 million COP)**
- **Constructed area: 4,800 m²**



BOGOTÁ



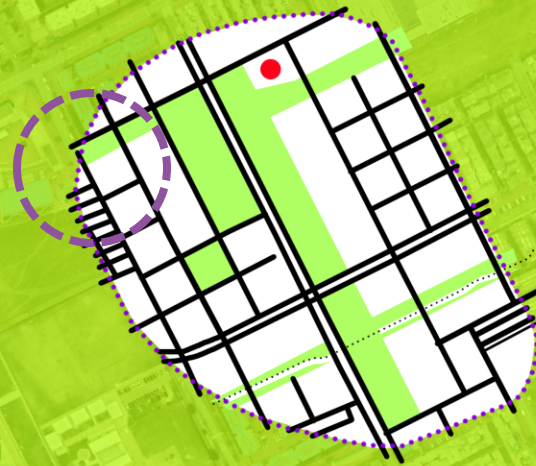
URBAN CONTEXT

- Land: Urban
- District: Bosa
- Population: 823,041
- Socioeconomic strata: Low
- Topography: Flat

URBAN LANDMARKS

- Partial Plan: Ciudadela Porvenir – City Decree No. 395 of 2002.
- Universidad Distrital opened: August 9, 2017.
- Early childhood development center: opened 2009.

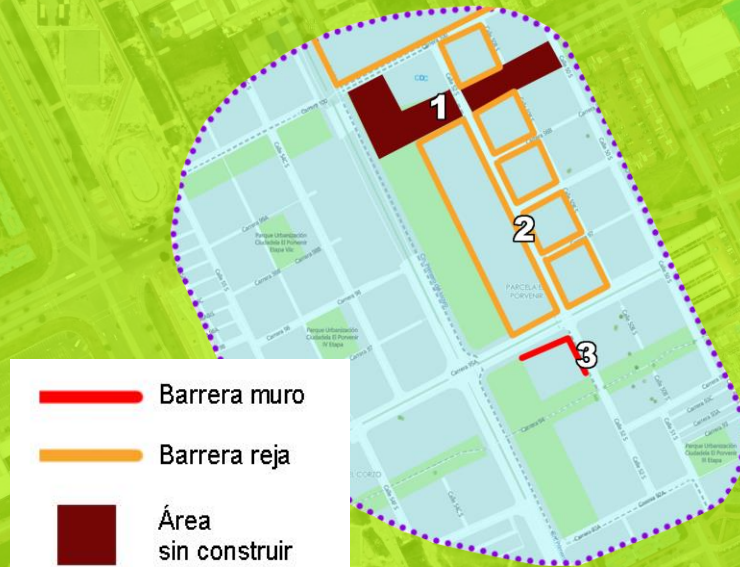
MORPHOLOGY



Blocks with high-rise buildings housing; determined by the design of a **partial plan** in an urban expansion zone.

High quality urban planning where **public space** is designed according to residential use.

THREATS





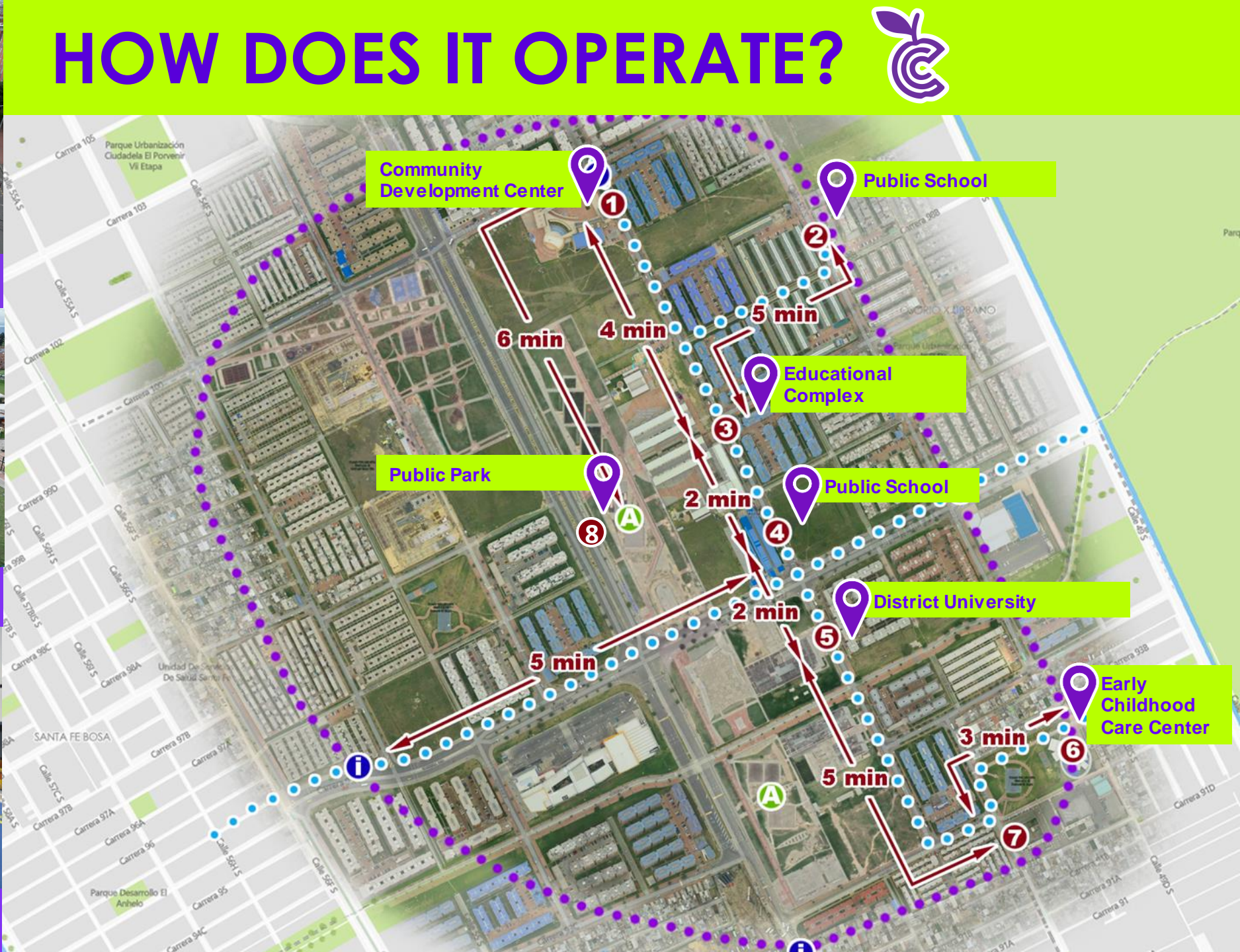
1
Community Development Center



8
Public Park



6
Early Childhood Care Center



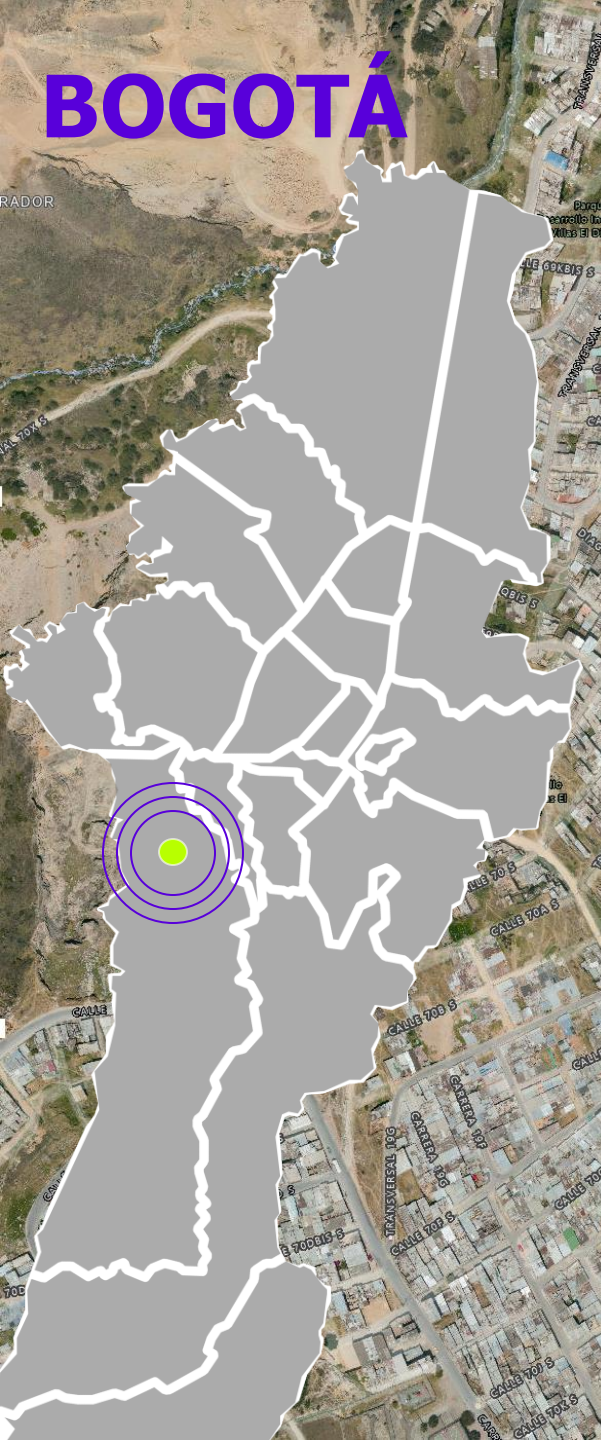
Administrative Facilities



- **4 Levels**
 - Rooftop
 - Skate area
 - Climbing wall
 - Areas for children
 - Open-air cinema
- **Hybrid Typology**
Transportation Infrastructure
+
Administrative Building
+
Public Space
- **Constructed Area**
3,500 m²



BOGOTÁ



URBAN CONTEXT

- Land: Urban
- District: Ciudad Bolívar
- Population: 616,455
- Socioeconomic strata: Low
- Topography: Hillside

URBAN LANDMARKS

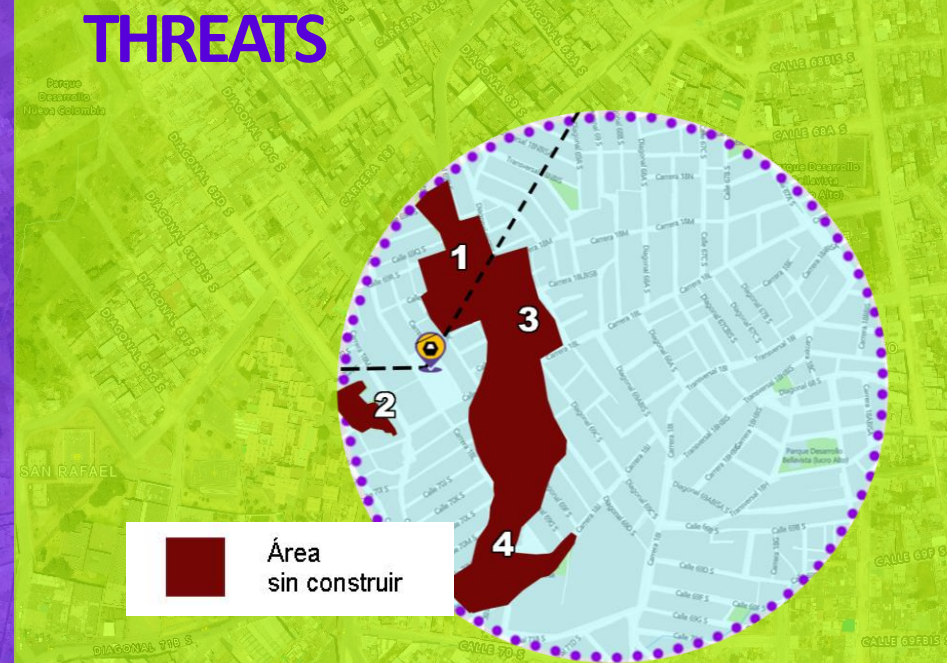
- Plots of land in the 50's.
- Marginal settlements in the 70's (displaced population).
- Cable cars opened in (3.3kms length): Dec. 27, 2018

MORPHOLOGY




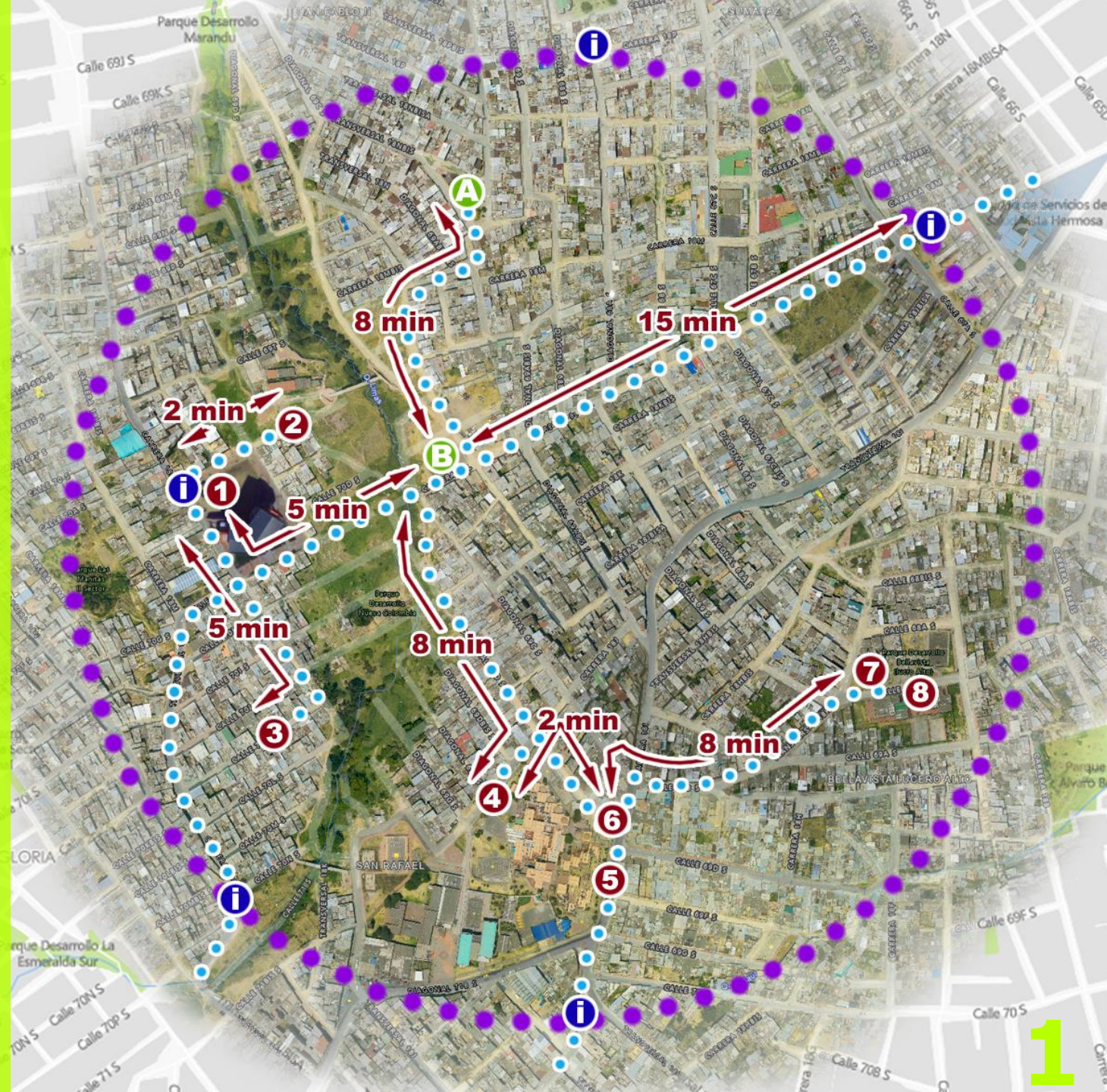
Compact blocks of progressive and informal development; determined by the presence of **main ecological structure**, the topography and the progressive construction of roads.

THREATS



- 1 SuperCADE Manitas
- 2 Early Childhood Care Center Manitas
- 3 Early Childhood Care Center Maravillas Infantiles
- 4 Center for People with Disabilities Vista Hermosa
- 5 Public School Rafael Uribe Uribe
- 6 Public School Confederacion Brisas del Diamante
- 7 Day Center Carlos Gaviria
- 8 Public School El Porvenir
- A Public Park Juanchito Pinpon
- B Public Park El Tierrero
- i Information Totem

 **Care Block #2**
Ciudad Bolívar





Recreational and Sports Center

- **The Building has three blocks:**
 - **Block A (swimming pools):** Olympic and recreational pools, nursing station, bathrooms, changing rooms, early childhood care center, gym, coffee shop, restaurants and terraces.
 - **Block B (Sports Center):** Multipurpose court, playground and commercial spaces.
 - **Cultural Building:** Cinema auditorium, music and recording room, ballet hall, plastic arts and lactation area.
- **Constructed area:** 12.000 m²



BOGOTÁ



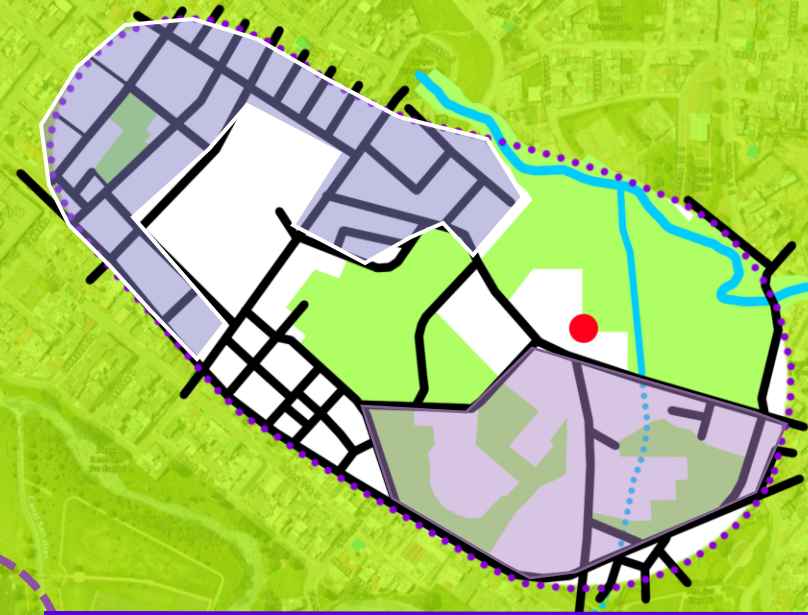
URBAN CONTEXT

- Land: Urban
- District: San Cristobal
- Population: 403,674
- Socioeconomic strata: Low
- Topography: Mixed (flat and hillside with slopes between 10°- 15°)

URBAN LANDMARKS

- San Cristóbal Metropolitan Park built in 1968
- Velodrome opened in 1951
- Construction of San Rafael Clinic (1929) and San Blas Hospital (1983)

MORPHOLOGY



Blocks with formal high-rise buildings housing and compact blocks of progressive development.

THREATS



- Barrera muro
- Barrera reja
- Área sin construir
- × Campamento Habitante de calle

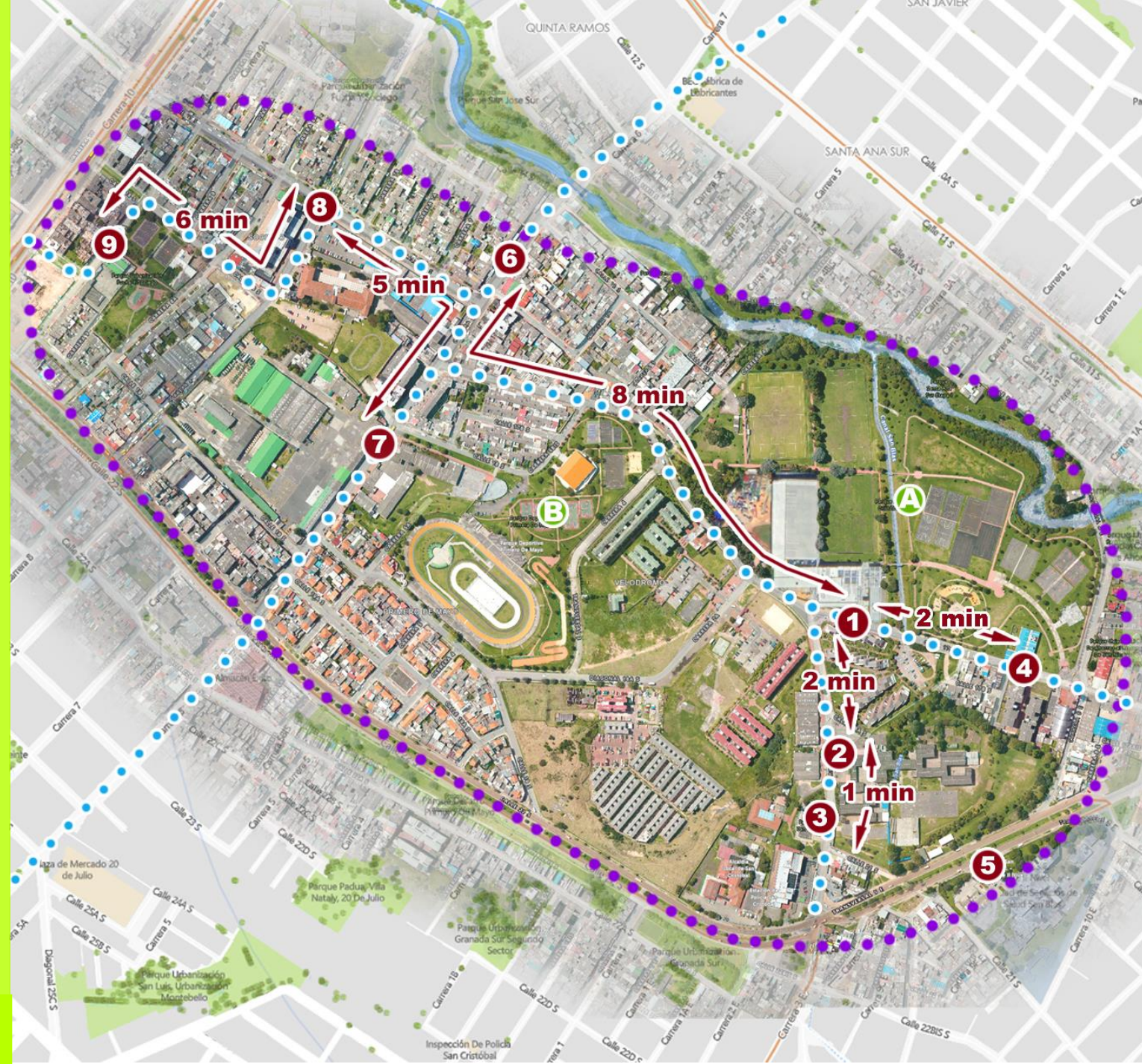


- 1 Recreational and Cultural center San Cristóbal
- 2 Public School Manuelita Saenz
- 3 Community Development Center San Blas
- 4 Early Childhood Care Center
- 5 San Blas Hospital
- 6 Public School José Félix Restrepo (#4)
- 7 Public School José Félix Restrepo (#1)
- 8 San Rafael Hospital
- 9 Public School Rafael Núñez
- A Public Park San Cristóbal
- B Public Park Primera de Mayo
- i Information Totem



Care Block #3

San Cristóbal



2

 Care Buses



3



Care Home Delivery Service



THE SYSTEM ALREADY EXCEEDED **150,000 SERVICES**



138,907
services
in 10

 Care Blocks

11,988 services
in 2



 Care Buses

2,000 homes
in 3 programs for

 Care Home
Delivery



6,159 Caregivers
formed.



6,827 persons in
workshops for
cultural change.





What's Next?



URBAN MASTER PLAN:

1 Prioritization Index

4 variables:

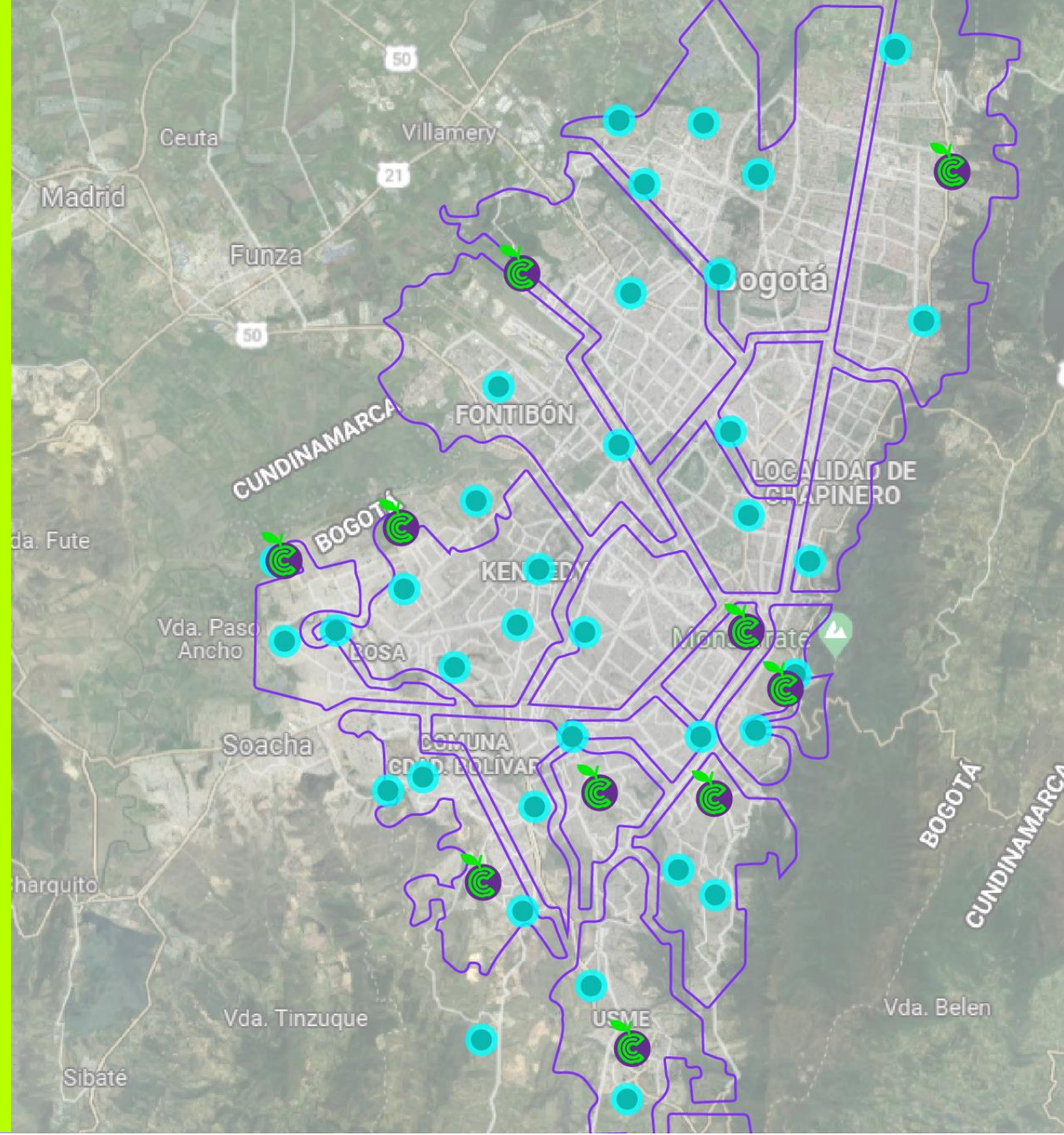
- Care Demand (25%)
- Density of Caregivers (25%)
- Poverty (25%)
- Participatory Budgets (25%)

2 Facilities Deficit.

3 Mobility Megaprojects Modal Integration Areas (AIM).

4 Projects Prioritized by the Urban Master Plan.

5 Land Availability.

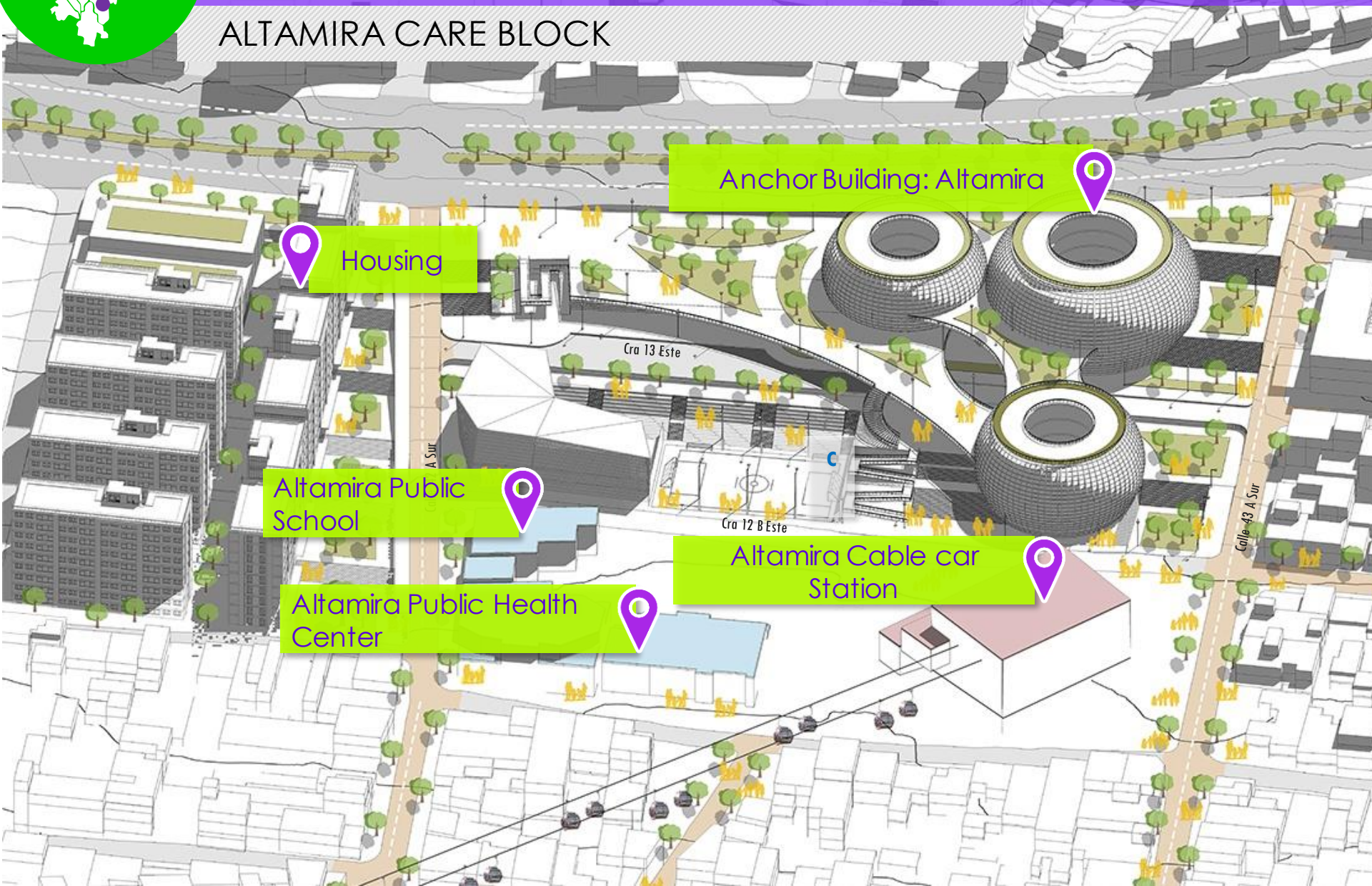




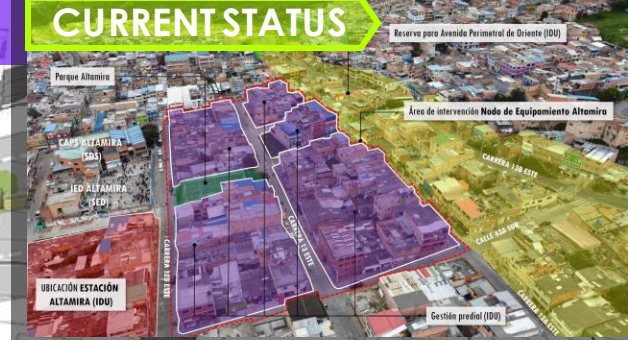
Building New Care Blocks

INTEGRAL REVITALIZATION PROJECT IN THE AREA OF THE SAN CRISTÓBAL CABLE CAR.

ALTAMIRA CARE BLOCK



CURRENT STATUS



BENEFICIARIES
97,310 People



BUILT-UP AREA : 22,506 M²

SECRETARIATS INVOLVED:
Women + Recreation,
Culture and Sports + Social
Integration + Economic
Development + Education.

BUDGET USD \$55 MILLION
STARTS: END OF 2023



ANCHOR BUILDING: GIBRALTAR



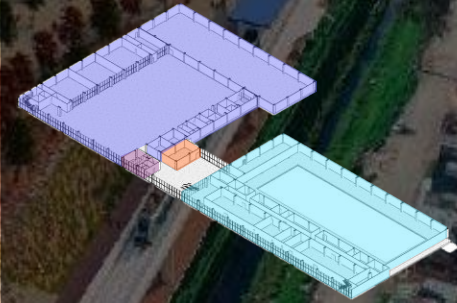
LEVEL 2



SPORTS CENTER:
Bleachers Spectators
Training Facilities

POOLS:
Spectator bleachers
Building Restaurant
Gym / Sports Area
Halls / Sports Area

LEVEL 1



SPORTS CENTER:
Area of competition
Training Facilities Disciplines
Athletes services

POOLS:
Swimming pool area
Athletes areas

ACCESS HALL

ADMINISTRATION

ARCHITECTURAL PLANNING	AREA m2
POOL AREAS	9095
SPORTS CENTER	8331
ADMINISTRATIVE AREAS	92
TECHNICAL AREAS	571
TOTAL PROJECT WITHOUT CIRCULATION	18731
WALLS + STRUCTURE + CIRCULATION	2835
TOTAL PROJECT	21567



“La Ciudadela del Cuidado”



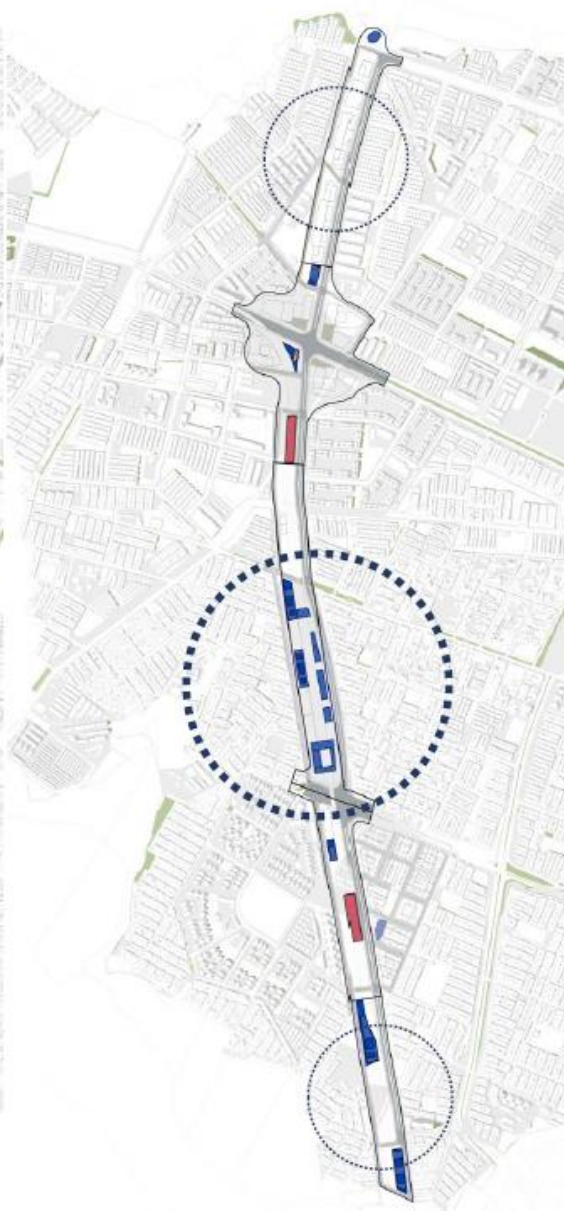
PUBLIC SPACE

Environmental Connectivity



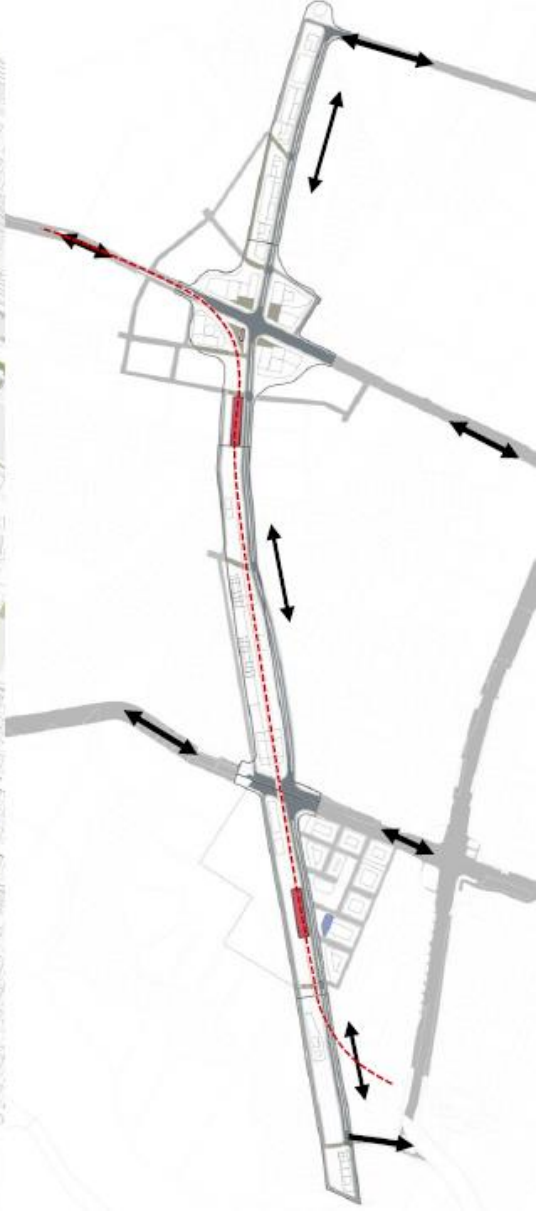
FACILITIES

Care Block



MOBILITY

Urban Connectivity - Subway



Regenerative architecture is a commitment to return to the earth and to humans what it has given us



Diana Rodríguez Franco
Secretary of Women's Affairs
✉ drodriguezfr@sdmujer.gov.co
🐦 @secretdistmujer
🐦 @drodriguezfr



Want to learn more
about the Care System
in 5 minutes?

Bogotá's Women
Care System

